



Welcome to Parekh Group

lead by ideas ...



WELCOME TO THE PAREKH GROUP

- ☛ **Six decades of experience**
- ☛ **Global Approach**
- ☛ **Infrastructure Expansion**
- ☛ **Comprehensive Solution**
- ☛ **National Network**

Six decades back we began as a trading based organization have today diversified into shipping, logistics and hospitality.

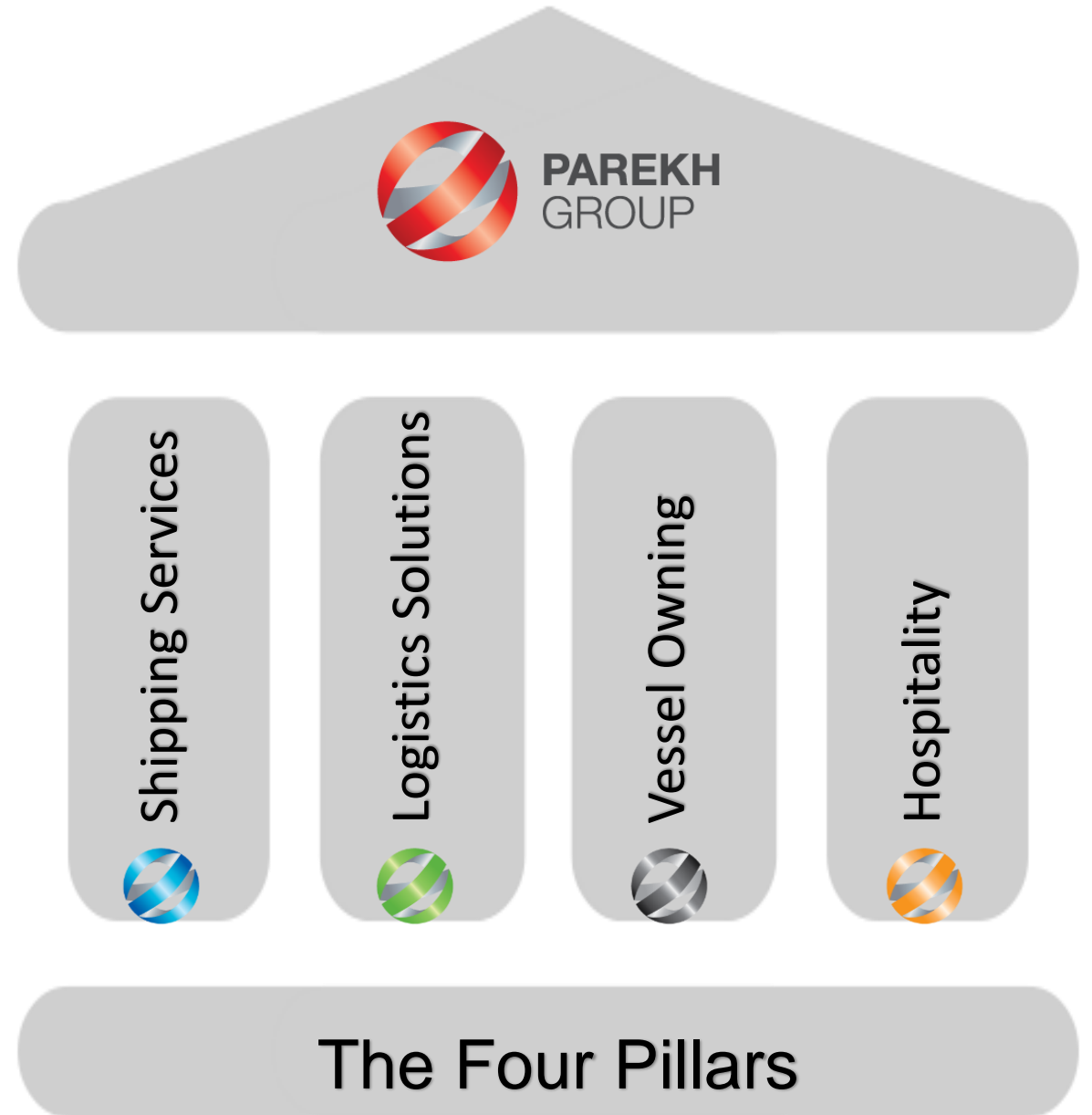
It is our familial traits that make us one strong team. As individual Units, our companies offer specialized and in-depth expertise in the domain they function. Each, a major player in their chosen specialization but together, they are like the flock of birds.

One team.

Parekh Group is a family-owned company run by this value system of oneness. We always aim to exceed expectations and this brings about lasting relationship. Every employee, client, vendor, business associate is equally important in this family tree.

We have an extremely proactive and enterprising top management. Personalised consumer services and customized solutions have played significant role in our success story.

Our businesses are divided
into 4 verticals



BUSINESS VERTICAL

Parekh Group

Shipping Services



Logistics Solutions

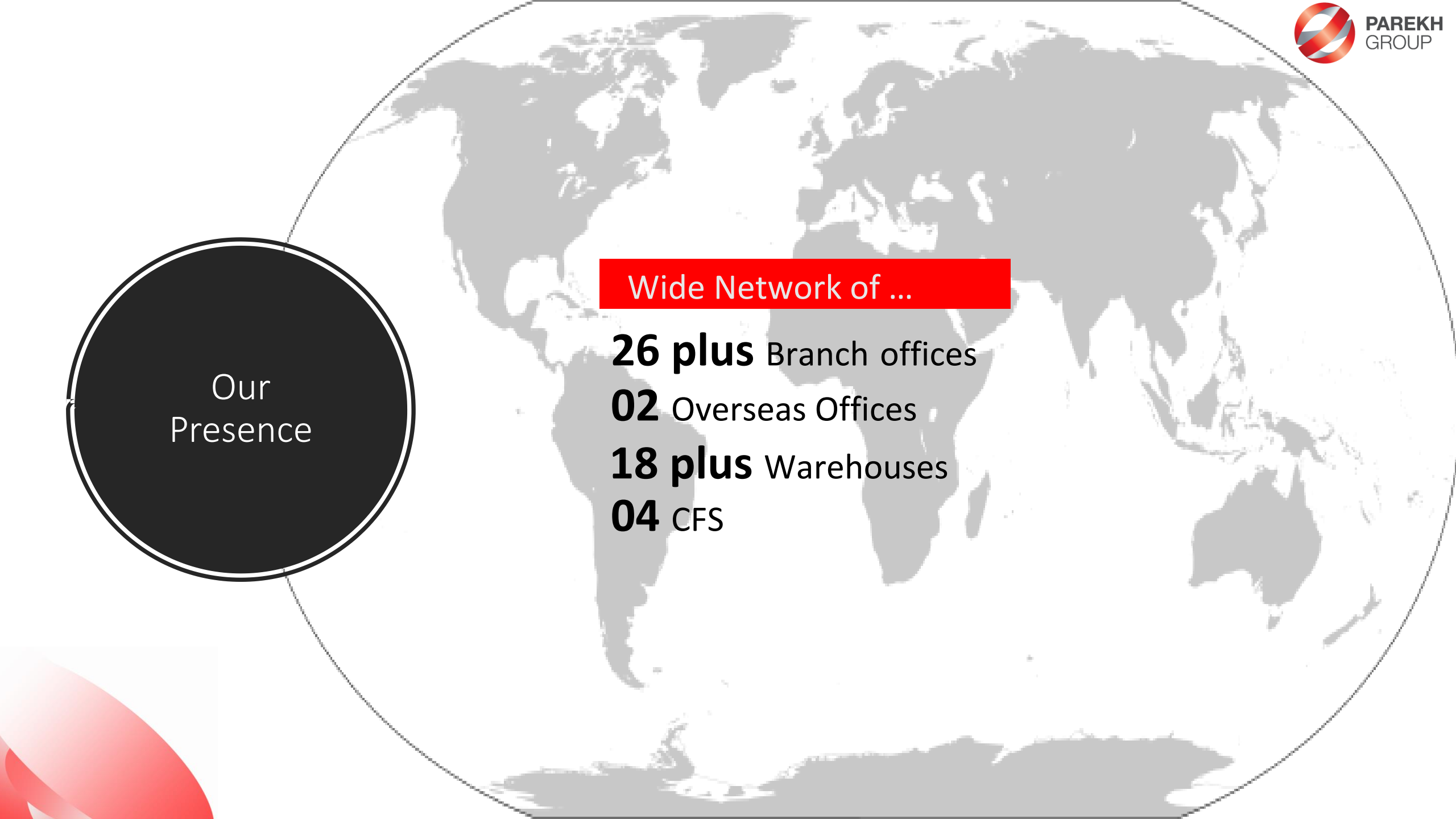


Vessel Owning



Hospitality





Our
Presence

Wide Network of ...

26 plus Branch offices

02 Overseas Offices

18 plus Warehouses

04 CFS

SERVICES OFFERED



LINER SHIPPING SERVICE

Parekh Marine Services has an elaborate network of offices, a team of well-trained professionals and an extensive contact list, which makes us a leading name in the business. Apart from facilitating frequent and timely sails, we also have a proven track record of establishing new lines in the subcontinent.

NON - LINER SHIPPING SERVICE

With a breadth of experience spanning over three decades, the organization has scaled new heights with its unparalleled expertise and a cordial and constant liaison with port authorities, customs, relevant trade and other governing bodies. Our operational style allows us to offer timely and smooth delivery to our clients every time.



CHARTERING & SHIP BROKING

An impressive portfolio of dry cargo chartering makes our brokering services a force to reckon with. Our dedicated team comprises of mariners who are fellows and members of the Institute of Chartered Shipbrokers, London and dynamic support staff who work continuously to optimize the output for an array of clients.

PROJECT & RO-RO SERVICES

We work closely with some of the leading shipping lines and Ro-Ro carriers to ensure top-of-the-line service to clients inside as well as out of India.



OFFSHORE AGENCY

Our extensive list of off-shore offerings include timely and personalized service to the Indian offshore oil and gas industry, custom clearance services, handling & transportation services, crane rental & freight forwarding services and tugs and barges.



NAVA SHEVA CFS



- Total Area 42000 Sqmt
- Covered warehouse 9000 sqmt
- Admin building 2000 sqmt
- C-TPAT Certified Facility
- Empty container depot with IICL Standard repair facility
- Reefer point facility

MUNDRA CFS



- Total Area 54000 Sqmt
- Covered warehouse 11000 sqmt
- Admin building 837 sqmt
- C-TPAT Certified Facility
- Empty container depot with IICL Standard repair facility
- Reefer point facility

KRISHNAPATNAM CFS



- Total Area 61140 Sqmt
- Covered warehouse 9000 sqmt
- Admin building 1521 sqmt
- Reefer point facility
- 24*7 All-weather operation

HAZIRA CFS



- Total Area 54500 Sqmt --
- Covered warehouse 6000 sqmt
- Admin building 1300 sqmt
- C-TPAT Certified Facility
- empty container depot with IICL Standard repair facility
- Reefer point facility

OUR SERVICES



Hub & RDC Operation



Solution Designing



Parts/Component Management



Primary/Secondary transportation



Cold Chain Management

WE MANAGE



Over 1.5 million sq. ft. of warehousing space



18+ Locations



Team of over 1000 professionals & operators

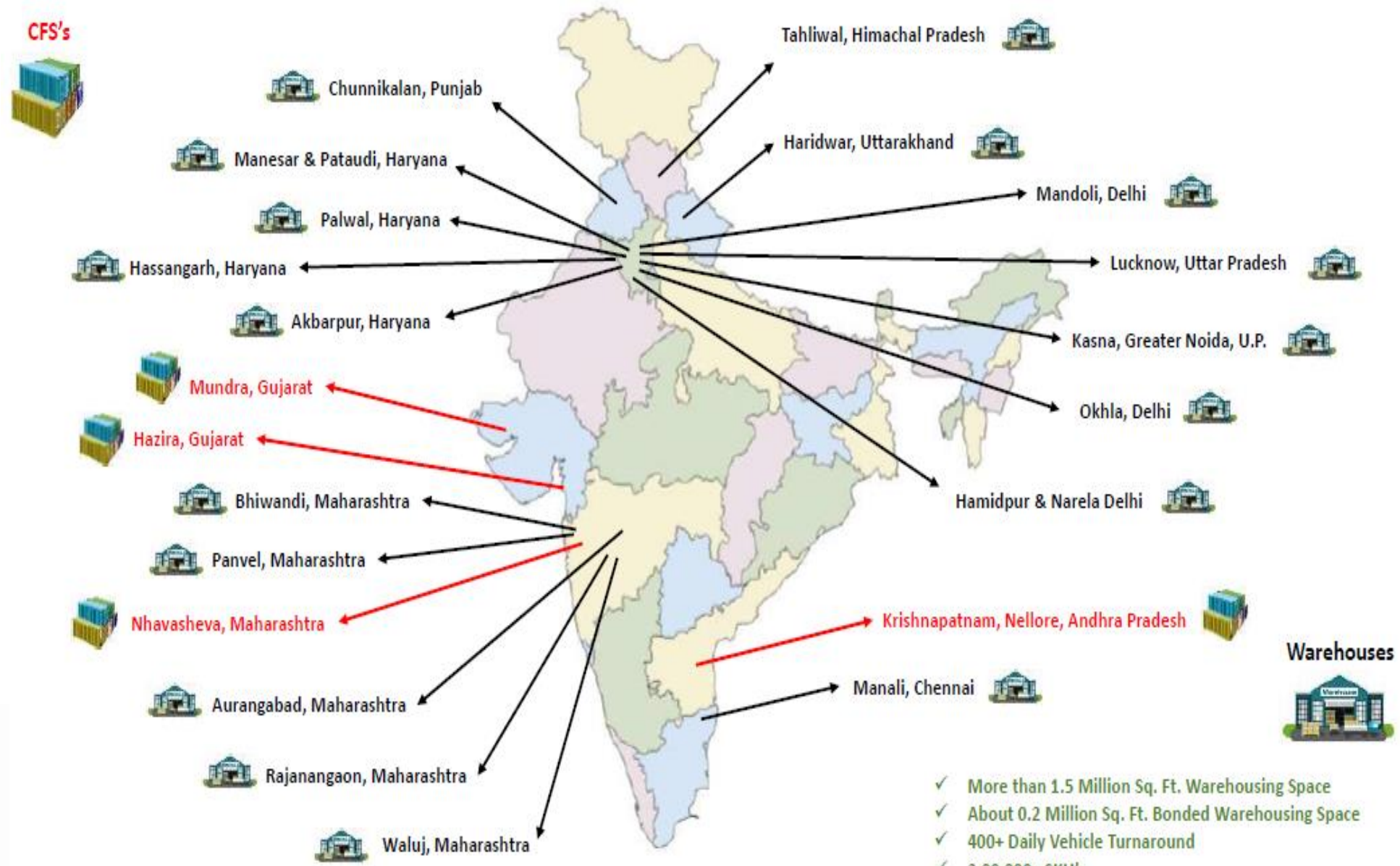


500000+ SKUs



6000+ Monthly vehicle turnarounds

OUR WAREHOUSE NETWORK



- ✓ More than 1.5 Million Sq. Ft. Warehousing Space
- ✓ About 0.2 Million Sq. Ft. Bonded Warehousing Space
- ✓ 400+ Daily Vehicle Turnaround
- ✓ 2,00,000+ SKU's
- ✓ 18+ Locations

WAREHOUSING LOGISTICS



- Warehouse operations & inventory management
- Bar code based tracking coupled with WMS
- Life cycle management of MHEs & Storage systems
- Sequencing/Kitting/Labelling/Invoicing/Quality Inspection
- CKD/SKD/Part by Part Packaging
- Last Mile Distribution/ Milk Run/ Cross Deck
- Supplier/Customer coordination and VMI

IN-PLANT LOGISTICS



- Management of in-plant logistics- Gate entry to Line feeding of material-end to end process management
- In-Plant traffic, safety & Dock management , management of vehicle turnaround time & Dock Marshalling
- Strategy & Design of storage line feeding systems
- Visual & 5S Management
- Contract workforce management

DISTRIBUTION



- Consolidation & Deconsolidation Centers at all vantage points. Forward and Reverse milk run collection and delivery
- First and last mile delivery through dedicated vehicles with preventive condition monitoring
- Control Tower- 24*7 tracking and help desk facility. Performance tracking and reporting through data analytics

HYDRAULIC CRANES



Our hydraulic crane equipment is the best in the industry featuring high-octane crane capacities to handle everything from medium-sized packages to those weighing several tonnes more.

CRAWLER CRANE



Our crawler cranes operate reliably and efficiently for many years. We focus heavily on economical, high performance machines during the development phase.

TRAILERS



Trailer systems are intensively used in conjunction with other machinery for lifting and transporting heavy goods. They are generally integrated with large trucks to move cargo efficiently and quickly.

REACH STACKER



Reach stackers play an essential role in the cargo shipment process, partly why a special emphasis is laid on deploying the best functioning ones.

FORKLIFTS



Forklifts blend the practicality of the crane and the ease and mobility of a truck to help move around shipments.

CUSTOM BROKING



With more than 20 years of experience in the field of custom broking, Logistic Enterprises has a vide experience in custom formalities and port related activities catering to various industries

- NVOCC services for ocean shipping
- Own network of agents in all GCC countries and Indian subcontinent
- Inland haulage for all GCC and Middle East countries
- Inter-Emirates road and coastal transportation
- Third-party warehousing facilities
- Packaging, labeling, consolidation & deconsolidation
- Project Cargo Handling in all Gulf Ports

Owned special equipment

- flat rack containers
- Open Top Containers
- Super Rack containers
- Collapsible Flat Rack Containers
- High Cube Containers.





- Total 31 nos of tanks available with different storage capacity ranging from approx 250 KL to 5000 KL such as 250KL/1000KL/ 2000KL/ 2500KL/ 3000KL/ 3500KL/ 5000KL.
- Total Capacity – 65115 KLS.
- 14” MS Off Shore pipe line connectivity from Kandla port Liquid jetty to our terminal with capacity to discharge 400 to 500 CBM/Hour.
- 24/7 Operational facility with state-of-the-art Inventory Management System with Professional & Customer Oriented Operational & Commercial Team.
- Single Window Operations running in Control Room
- OSHAS 18001:2007 Certified Facilities with Hygiene Facilities for surveyors and other stakeholders.
- An experienced Human Resource and Customer Care Team
- Modern office with the latest communication facilities
- Sophisticated fire fighting system
- 24/7 high security measures with specially trained security personnel and CCTV surveillance

AHTS



Our Anchor Handling Tug Supply vessels provide a range of multi-utility services over a wide area of operations. From search and rescue to oil drilling operations, our fleet of AHT's helps you to deliver to your customers on time and budget.

Towing Tug



Our towing tugs are versatile workhorses that serve to make your offshore operations faster and more efficient. From moving barges and cargo vessels in and out of berth to offshore support, our tugs are highly rated for their high availability and effectiveness.

Deck Cargo Barges



To transport outsized loads, our deck cargo barges offer an economical solution. Compliant with international safety and operational standards, they help you bridge the demand-supply gap during offshore activities.

Alila Diwa, nestled amidst the lush paddy plantations of South Goa, promises a 'Surprisingly Different' experience. Inspired by nature, the hotel's distinct architecture enlivens the innate beauty of Goa.



OVERVIEW

- OSPL is in Freight forwarding logistics solution services - both sea freight and air freight
- OSPL shares a global network of agents in major countries and ports
- OSPL provides a complete package comprising customs clearance, transportations, Warehousing, Packaging and consolidation services.
- OSPL has successfully made a tremendous mark in project logistics.

MISSION



- ORCHID HAS A MISSION OF BEING ONE OF THE LEADING LOGISTICS SERVICE PROVIDER IN THE FIELD OF FREIGHT FORWARDING, ANCILLARY LOGISTICS & RELATED CONSULTANCY SERVICES.
- WE WILL DO SO THROUGH PERIODIC REVIEW OF THE MANAGEMENT SYSTEMS FOR CONTINUAL IMPROVEMENT IN OUR PROCESSES, BUSINESS AVENUES AND RESOURCES.
- ORCHID IS ALSO COMMITTED TO ADHERE TO BEST PRACTICES AND STATUTORY COMPLIANCES GLOBALLY AND NATIONALLY.

SERVICE PORTFOLIO

AIR



- Consolidation (IMP/EXP)
- Express Services
- Cargo Chartering
- Door to Door Services
- Affiliated to IATA/FIATA
- Customs brokerage

OCEAN



- Import/ Export Forwarding
- LCL Services
- Specialization in Agro Commodities
- Global Services for DDP/DDU/EXW shpts.
- Customs Compliances

PROJECTS & BREAK BULK



- Turnkey Projects
- Small & Medium sized Projects
- ODC handling

TRANSPORTATION & WAREHOUSING



- Commodity specific warehousing facilities with special solution
- Warehouse operation Management services
- Wide range of customized transportation services



VALUE ADDED SERVICES



**CUSTOMS AND CENTRAL EXCISE
CONSULTANCY**



**CALCULATION FOR LIFTING &
LASHING MANAGEMENT**



**HOT WORK AND REPAIRING
WORK IN PORT**



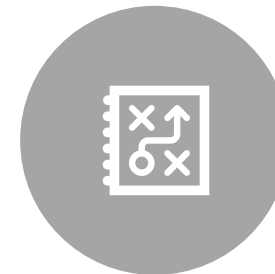
**SITE LOADING AND UNLOADING
MANAGEMENT / WITH
EQUIPMENT OR MANUAL
LIFTING**



PACKAGING AT SITE / IN PORT



**SHIPPING LINE AND PORT
PERMISSION FOR CARGO
HANDLING WITH TECHNICAL
PRESENTATIONS**



**STUFFING PLANNING AND
METHODOLOGY**

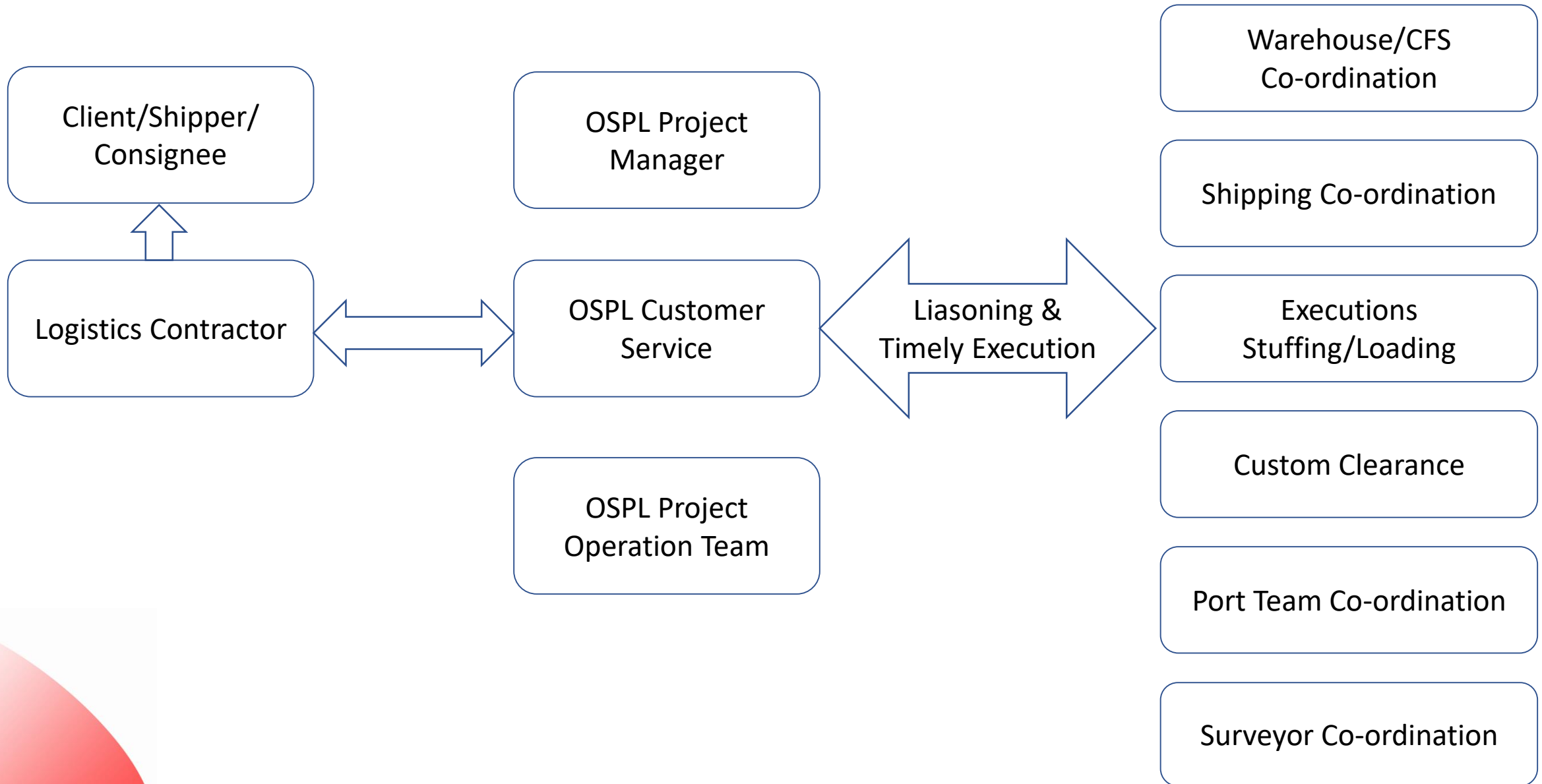
Existing Forwarding Setup

| LOCATION / ACTIVITY | AIR EXP | AIR IMP | OCEAN EXP INCLUDING LOGISTICS | OCEAN IMP INCLUDING LOGISTICS |
|---------------------|---------|---------|-------------------------------|-------------------------------|
| MUMBAI | YES | YES | YES | YES |
| PUNE | YES | YES | YES | YES |
| AHMEDABAD | YES | YES | YES | YES |
| KANDLA | YES | YES | YES | YES |
| BARODA | YES | YES | YES | YES |
| BANGALORE | YES | YES | YES | YES |
| CHENNAI | YES | YES | YES | YES |
| COCHIN | YES | YES | YES | YES |
| TUTICORIN | YES | YES | YES | YES |
| DELHI | YES | YES | YES | YES |
| LUDHIANA | YES | YES | YES | YES |
| KOLKATTA | YES | YES | YES | YES |

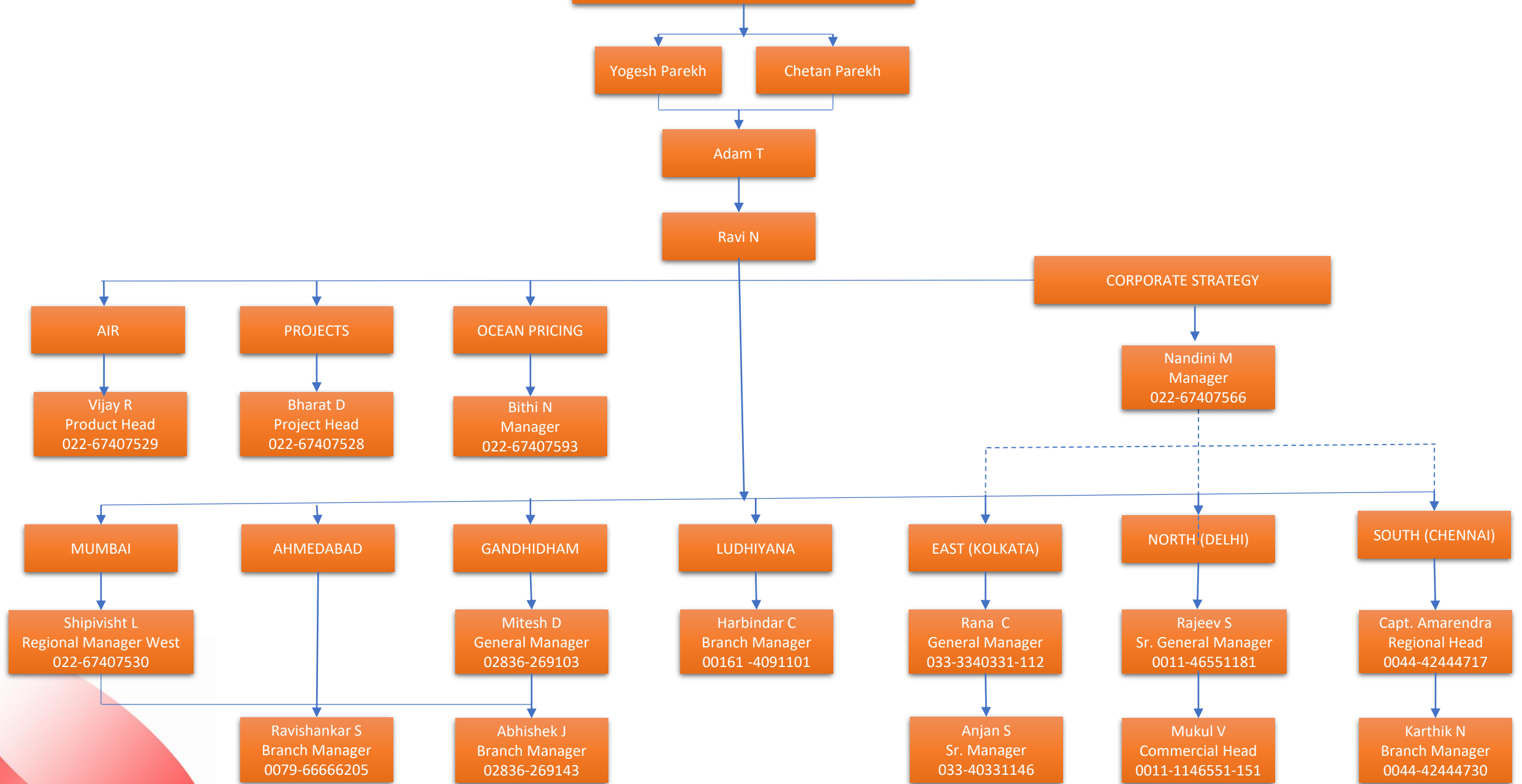
STRENGTHS

- **SISTER COMPANY UNDER PAREKH GROUP**, having pan India presence and good reputation in statutory authorities of Ports.
- **Structured teams** to meet our Focused Products.
- **Coverage** at Major Airports and seaports In India
- **Dedicated Experienced Staff** For Operation And Pricing of AFF and Ocean , Projects Pan India
- **Dedicated Customer Service** Team At Each Location,
- **Airport Customs Brokerage Services** in Each Location in India both Inbound and outbound cargo
- **Strong Carrier relationship** Command respect from shipping lines due our volumes as per for most sectors.
- Our **Agro team** is a leading container volume provider to different shipping lines for cotton commodities. Our team is focusing for commodities like Yarn , Maize which have mainly exports to China , Vietnam , Pakistan , Bangladesh, Japan, Indonesia, Africa.
- Our **Project team** has innovatively discovered the maximum utilization of the normal containerized vessels for break bulk and volumetric project cargo rather than using the Break Bulk conventional Vessels

Orchid As Single Point Of Contact For All Operation Activities



OSPL ORGANOGRAM



Advantage

- OSPL has a pan India presence which ensures representation in all the major business centers Port locations.
- OSPL's expertise and experience in handling all types of cargo.
- Experience and expertise in dealing with overseas associates and capable of providing uniform service as required.
- Reliable, transparent and familiarity with international practices.
- Wide client base due to wide range of in house business activities
- Flexible to associates strategy about expansion of services in India.
- Adapting Information Technology to meet our partner's requirements.
- Flexible to associates strategy about expansion of services in India.
- Edge to handle African countries shipment with in-house professional handling Africa trade in India and reliable overseas partner in Africa.
- Specialized in handling Projects / RO-RO and Break-bulk consignments.

GROUP ADVANTAGE





PORTS IN INDIA



Our Presence

 Head Quarters

Anchorage, Near Amarnath Patil Ground,
Off Govandi Station Road, Govandi [East],
Mumbai 400 088,
INDIA

Visit Our Website: <http://www.parekhgroup.in/>



UAE



SINGAPORE

THANK YOU