



PAREKH
GROUP

WELCOME TO

PAREKH GROUP

Lead By Ideas.....



WELCOME TO PAREKH GROUP



Seven decades of experience



Global Approach



Infrastructure Expansion



Comprehensive Solution



National & International Network

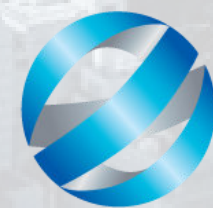
Our businesses are
divided into 4 verticals



**PAREKH
GROUP**

Seven decades back, we began as a trading-based organization and have today diversified into shipping, logistics, and hospitality. It is our familial traits that make us one strong team. As individual units, our companies offer specialized and in-depth expertise in the domain where they function. Each is a major player in their chosen specialization, but together, they are like a flock of birds—one team.

Parekh Group is a family-owned company run by this value system of oneness. We always aim to exceed expectations, and this brings about lasting relationships. Every employee, client, vendor, and business associate is equally important in this family tree. We have an extremely proactive and enterprising top management. Personalized consumer services and customized solutions have played a significant role in our success story.



SHIPPING SERVICE



LOGISTICS SOLUTIONS



VESSEL OWNING



HOSPITALITY



26
Branch offices



05
Overseas Offices

**OUR
PRESENCE**



26
(5.5 Million sq. ft.)
Ware Houses



03
CFS

SERVICES OFFERED



NVOCC



STEVEDORING



WAREHOUSING



HOSPITALITY



CHARTERING



CRANES



PAREKH GROUP



LINER AGENCY



BULK / CAR
CARRIER



TANK FARM



CFS



OFFSHORE
VESSELS



FREIGHT FORWARDING

A large container ship is docked at a port during the "blue hour" of dusk. The ship's deck is densely packed with stacks of colorful intermodal containers in shades of red, blue, and yellow. The ship's white superstructure, including the bridge and various masts, is visible against the twilight sky. In the foreground, the dark, metallic hull of the ship curves into the frame. A bright sun or light source on the left creates a lens flare effect. A solid red horizontal banner is superimposed across the middle of the image, containing the text "SHIPPING SERVICE" in white, bold, uppercase letters.

SHIPPING SERVICE



LINER SHIPPING

Parekh Marine Services & Seabridge Marine have an elaborate network of offices, a team of well-trained professionals and an extensive contact list, which makes us a leading name in the business. Apart from facilitating frequent and timely sails, we also have a proven track record of establishing new lines in the subcontinent.

NON- LINER SHIPPING

With over three decades of experience, we have reached new heights through unparalleled expertise and a strong rapport with port authorities, customs, and relevant governing bodies. Our operational approach ensures seamless and timely delivery for our clients consistently. Leveraging our extensive industry knowledge, we navigate complex logistics effortlessly. Our commitment to maintaining cordial relationships allows us to streamline processes and overcome challenges with ease, ensuring exceptional service at every step.



CHARTERING & SHIP BROKING

Our unparalleled brokering services, backed by an extensive dry cargo chartering portfolio and a dedicated team of esteemed mariners, ensure optimized output to meet the diverse needs of our clients.



PROJECT & RO-RO SERVICES

We work closely with some of the leading shipping lines and Ro-Ro carriers to ensure top-of-the-line service to clients inside as well as out of India.



OFFSHORE AGENCY

Our extensive list of off-shore offerings include timely and personalized service to the Indian offshore oil and gas industry, custom clearance services, handling & transportation services, crane rental & freight forwarding services and tugs and barges.

SECTORS COVERED, SERVICES AND FREQUENCY



GULF , RED SEA, SOUTH EAST ASIA			
SERVICES	IEX INDIA EXPRESS	FEX FAR EAST EXPRESS	FEX1 FAR EAST EXPRESS ONE
FREQUENCY	WEEKLY	WEEKLY	WEEKLY



RED SEA, FAR EAST & SOUTH EAST ASIA, LATIN , US, MEDITERRANEAN			
SERVICES	FIL FAR EAST INDIA LATIN	FIM FAR EAST INDIA MEDITERRANEAN	PS3,PS4,PS7,PN2,PN4 USA WEST COAST
FREQUENCY	WEEKLY	WEEKLY	WEEKLY



RUSSIA, FAR EAST, SOUTH EAST ASIA				
SERVICES	CIX2 CHINA INDIA EXPRESS 2	SIS1 SINOKOR INDIA SERVICE	SIS2 SINOKOR INDIA SERVICE 2	NWX NORTH CHINA INDIA WEST COAST XPRESS
FREQUENCY	WEEKLY	WEEKLY	WEEKLY	WEEKLY



ASYAD LINE





S I N O K O R





H M M



EUKOR - OUR GLOBAL NETWORK

EUKOR operates a large and modern fleet of specialised Pure Car and Truck Carriers (PCTC), sailing to more than 220 ports worldwide and transporting in excess of 4 million Car Equivalent Units (CEU) annually, using trade routes and a global network of offices and agents.



EUKOR Car Carriers Inc.
We deliver

EUROPE TO SOUTH EAST ASIA & FAR EAST (CAEX)

Frequency: Fixed Day Weekly Liner Service

Vessel Type: 6,000 - 7,300 Unit PCTC

● Loading/Discharging Port
● Transshipment Port

EUKOR **PAREKH MARINE**

EUKOR Car Carriers Inc.
We deliver

FAR EAST TO SOUTH AFRICA & SOUTH AMERICA

Frequency: West Coast: 3-4 Voyages per Month
East Coast: 1-2 Voyages per Month

Vessel Type: West Coast: 6,000 - 7,200 Unit PCTC
East Coast: 6,000 - 7,200 Unit PCTC

● Loading/Discharging Port
● Transshipment Port

T/S Service for Asuncion, Zarate and La Plata via MVideo

EUKOR

EUKOR Car Carriers Inc.
We deliver

FAR EAST TO CENTRAL AMERICA & THE CARIBBEAN

Frequency: 1 Voyage per Month

Vessel Type: 6,000 Unit PCTC

● Loading/Discharging Port
● Transshipment Port

T/S service for outports in Caribbean at Santo Domingo

EUKOR **PAREKH MARINE**



EUKOR



CEEKAY SHIPPING



Ceekay Shipping Pvt. Ltd. is the in-house NVOCC arm of the group.

Ceekay Shipping started its operations in 2003 & over the past 20 years has proudly expanded its presence globally and is today a well-recognized brand name in the Industrial Project category.

- 3 CONTINENTS
- 150+ PORTS
- 45+ COUNTRIES
- 4 OWN OFFICES (DUBAI (HQ), SINGAPORE (RO), PORT KLANG, ABU DHABI) UPCOMING OFFICE IN SAUDI
- 6000+ SPECIAL CONTAINER FLEET (OWNED + LEASED)
- 6500+ DRY CONTAINER FLEET (OWNED)



REGIONS / COUNTRIES COVERED :-

FAR EAST | SEA | ISC | ME/PG | MED | EUROPE |
BLACK SEA | EAST AFRICA





LOGISTICS SOLUTIONS



AIR

- Express Services
- Cargo Chartering
- Door to Door Services
- Affiliated to IATA/FIATA
- Customs brokerage



OCEAN

- Consol services (LCL)
- Specialization in agro commodities
- Track & Trace shipments
- HAZMAT handling
- Sharp procurement & capacity management



PROJECT & BREAK BULK

- Turnkey Projects
- Customs, Consultancy & Compliances
- Route survey & planning
- Small & Medium sized Projects
- ODC handling



WAREHOUSING & DISTRIBUTION

- Commodity specific customised warehousing solution
- Warehouse operation & management services
- Wide range of customized transportation services
- Packaging & re-packaging facilities



Warehouse at Karanjade,
Panvel- 410206.
Total Closed Area of
10,000 Sqft with 122 Ft
Length & 82 Ft Width



Warehouse is facilitated with

- Fire extinguisher
- Security guards
- Safety posters
- Signages
- A wide gate opening of 15ft x 20ft. .





ORCHID SHIPPING PROJECTS HANDELED SNAPSHOTS



CERTIFICATIONS



NETWORK MEMBERSHIPS



SEABIRD MARINE PVT. LTD.



Its huge, its intimidating, like a football ground for big machines.
Also its an everyday work for our team.



NAVA SHEVA CFS

- Total Area 42000 Sqmt
- Covered warehouse 9000 sqmt
- Admin building 2000 stmt
- C-TPAT Certified Facility
- Empty container depot with IICL Standard repair facility
- 50 Reefer point facility



MUNDRA CFS

- Total Area 54000 Sqmt
- Covered warehouse 11000 sqmt
- Admin building 837 sqmt
- C-TPAT Certified Facility
- Empty container depot with IICL Standard repair facility
- 20 Reefer point facility



HAZIRA CFS

- Total Area 54500 Sqmt --
- Covered warehouse 6000 sqmt
- Admin building 1300 sqmt
- C-TPAT Certified Facility
- Empty container depot with IICL Standard repair facility
- 12 Reefer point facility



SEABIRD MARINE SERVICES



OUR UNIQUE OFFERINGS



These are not just the services but opportunities for us to serve you better and make your business grow multifold. Every service we offer has the undying support of the team, acute precision and adaptability ingrained in it.



NHAVA SHEVA
CFS



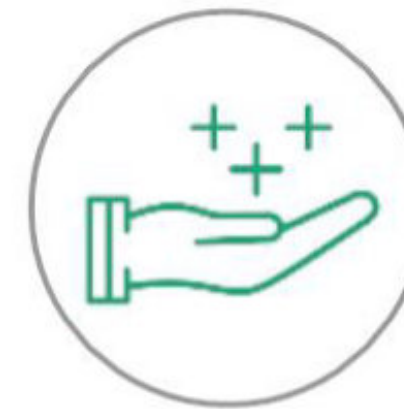
EXPORT FCL/
LCL SHIPMENT



HAZARDOUS
CARGO HANDLING



SPECIALIZED
CARGO



VALUE ADDED
SERVICES



BONDED & GENERAL
WAREHOUSE



COLD
STORAGE



GENERAL AND
REFRIGERATED
TRANSPORTATION



REVERSE
LOGISTICS



RFID. REAL
TIME
TRACKING



ROUND THE
CLOCK
OPPERATIONS



MAINTENANCE
AND REPAIRS OF
DRY CONTAINERS



**PAREKH
GROUP**

SEABIRD



LOGISTICS
& BEYOND.
DELIVERED.

OUR FEATURES



CCTV



State-of-art fire fighting systems

Safety measures



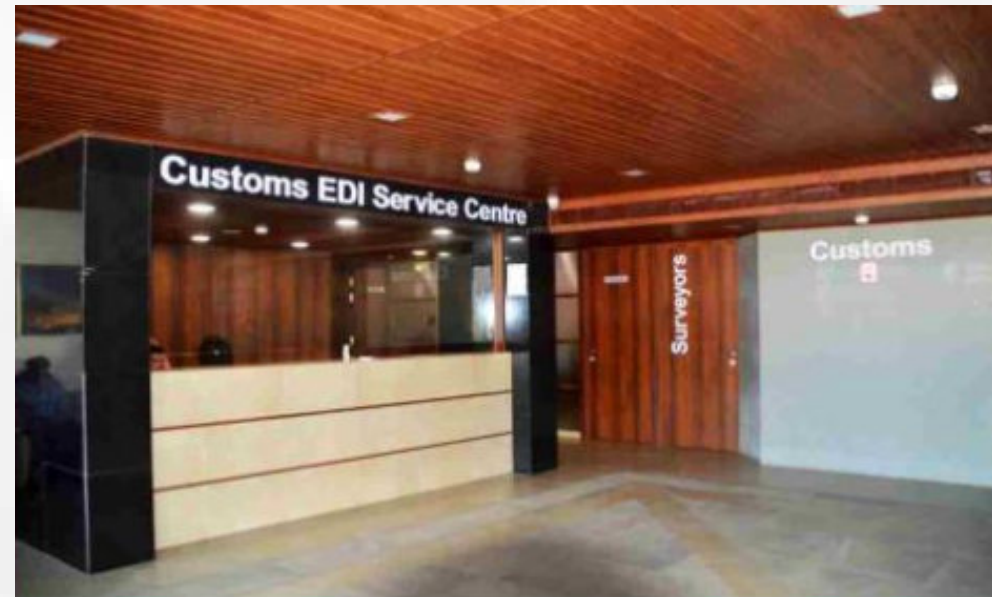
Independent container repair facility of IICL standard



Own container handling equipment's



Safety measures



EDI Service centre, customs staff, surveyors etc...



Fully furnished office accommodation for CHA, freight forwarders and clients



SEABIRD CFS



SEABIRD WAREHOUSING



Minds work behind machines to give you productivity. It's an epitome of synchronicity

Services

- We specialize in inbound-outbound logistics, and open yard management
- Parts/components management
- Network solutions and last-mile delivery
- Supply chain solution design
- Value-added services like packaging, custom labelling, multi-stage quality control, etc





S E A B I R D W A R E H O U S E



LOGISTIC ENTERPRISES PVT LTD

Rental of Material Heavy Equipments (MHEs)



HYDRAULIC CRANES

Our hydraulic crane equipment is the best in the industry featuring high-octane crane capacities to handle everything from medium- sized packages to those weighing several tonnes more.



CRAWLER CRANE

Our crawler cranes operate reliably and efficiently for many years. We focus heavily on economical, high performance machines during the development phase.



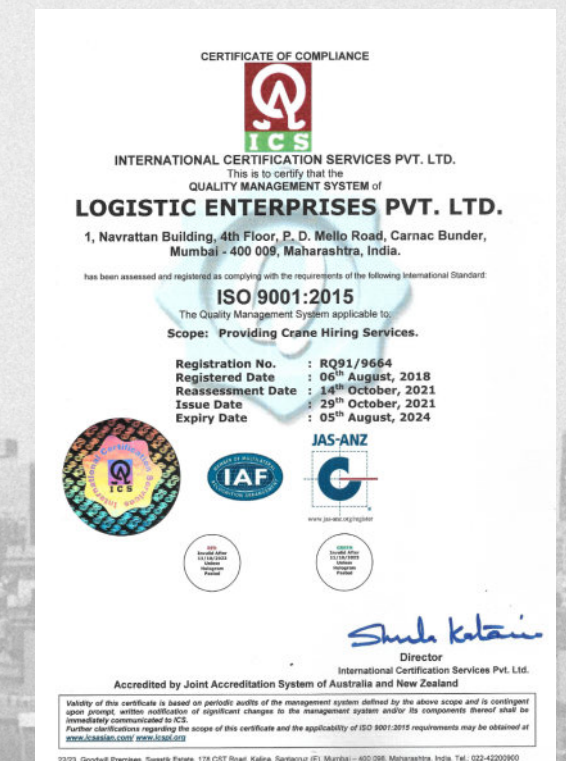
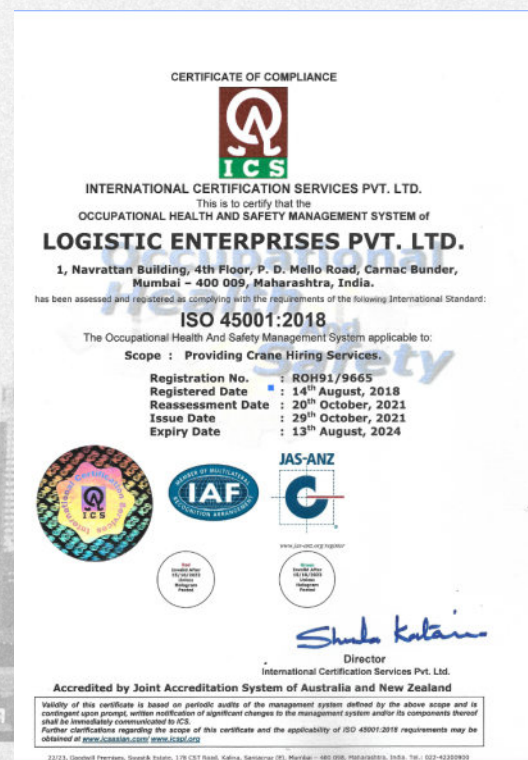
REACH STACKER

Reach stackers play an essential role in the cargo shipment process, partly why a special emphasis is laid on deploying the best functioning ones.



FORKLIFTS

Forklifts blend the practicality of the crane and the ease and mobility of a truck to help move around shipments.



TRAILER

Trailer systems are intensively used in conjunction with other machinery for lifting and transporting heavy goods. They are generally integrated with large trucks to move cargo efficiently and quickly.

CUSTOM BROKING

With more than 20 years of experience in the field of custom broking, Logistic Enterprises has a wide experience in customs & its complexities.



WAREHOUSING LOGISTICS

- Warehouse operations & inventory management
- Bar code based tracking coupled with WMS
- Life cycle management of MHEs & Storage systems
- Sequencing/Kitting/Labelling/Invoicing/Quality Inspection
- CKD/SKD/Part by Part Packaging
- Last Mile Distribution/ Milk Run/ Cross Deck
- Supplier/Customer coordination and VMI

IN-PLANT LOGISTICS

- Management of in-plant logistics- Gate entry to Line feeding of material-end to end process management
- In-Plant traffic, safety & Dock management , management of vehicle turnaround time & Dock Marshalling
- Strategy & Design of storage line feeding systems
- Visual & 5S Management
- Contract workforce management

DISTRIBUTION

- Consolidation & Deconsolidation Centers at all vantage points. Forward and Reverse milk run collection and delivery
- First and last mile delivery through dedicated vehicles with preventive condition monitoring
- Control Tower- 24*7 tracking and help desk facility. Performance tracking and reporting through data analytics



SEABIRD LOGISOLUTIONS
WAREHOUSE

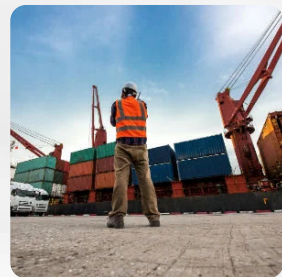
3PL, COLD CHAIN SOLUTION & WAREHOUSING



HUB & RDC OPERATIONS



SOLUTION DESIGNING



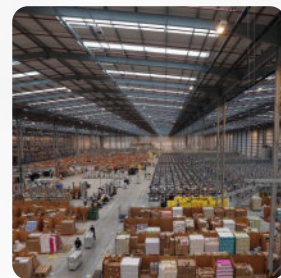
PARTS / COMPONENT
MANAGEMENT



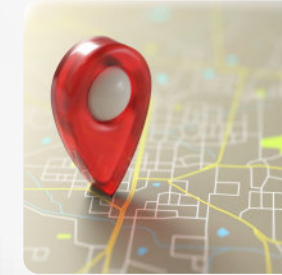
PRIMARY & SECONDARY
TRANSPORTATION



COLD CHAIN
MANAGEMENT



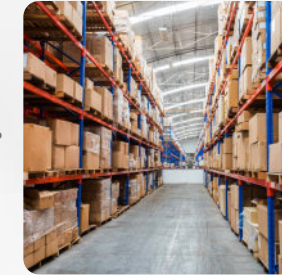
OVER 5.5 MILLION sq. ft.
WAREHOUSING SPACE



18+ LOCATIONS



TEAM OF OVER 1000
PROFESSIONALS &
OPERATORS



5,00,000+
SKU's



6,000+ monthly
vehicle turnaround



3PL & COLD CHAIN MANAGEMENT



What we do?

Seabird Logisolutions Ltd. offers complete Logistics, storage, transportation and distribution, in ambient & cold chain enabled solutions, across sectors with special focus on achieving customer objectives

Transportation:

- Multi-temperature vehicles (Frozen/Chilled/Controlled Ambient-closed & open body) 1 MT TO 25 MT.
- Dedicated, Short haul, point to point and city distribution services & long hauls.
- GPS enabled – track, trace and temperature monitoring Trained driver and support staff.
- Door Pickup and deliveries.
- Providing services to Retail, QSR, Bulk customers for FTL/PTL/LASTMILE/MILK RUN



Logistics Services

- Complete Warehouse Storage Solutions
- RM, FG, PM Handling for Industrial Use Products
- Tailored Distribution Services
- Time Bound Deliveries
- Business Integrated Solutions
- Invoicing & Timely dispatch

Distribution Services

- Primary & Last Mile Distribution across INDIA
- Dedicated Reefer & ambient Fleet
- Airport Drops for Pharma/Food Products
- FSSAI Compliant Trucks
- Multi-Temp Trucks
- Real Time Tracking
- Efficient Pre Trip, On Trip & Post Trip Controls

Pre Trip

- Reefer, vehicle & Data logger inspection
- Pre Cooling
- Product verification

On Trip

- GPS location & temperature monitoring
- Regular communication with Driver

SEABRIDGE TERMINALS PVT. LTD.



Terminal Facilities

- Total 31 nos of tanks available with different storage capacity ranging from approx 250 KL to 5000 KL such as 250KL/1000KL/ 2000KL/ 2500KL/ 3000KL/ 3500KL/ 5000KL.
- Total Capacity – 65115 KLS.
- 14” MS Off Shore pipe line connectivity from Kandla port Liquid jetty to our terminal with capacity to discharge 400 to 500 CBM/Hour.
- 24/7 Operational facility with state-of-the-art Inventory Management System with Professional & Customer Oriented Operational & Commercial Team.
- Single Window Operations running in Control Room
- OSHAS 18001:2007 Certified Facilities with Hygiene Facilities for surveyors and other stakeholders.
- An experienced Human Resource and Customer Care Team
- Modern office with the latest communication facilities Sophisticated fire fighting system
- 24/7 high security measures with specially trained security personnel and CCTV surveillance

CERTIFICATIONS





SEABRIDGE TERMINAL PVT LTD





VESSEL OWNING

Triton Maritime Private Limited



We own and operate a diverse fleet of offshore support vessels, serving the Indian Navy, Oil and Gas exploration companies, and their EPC contractors in India, the Middle East, and SouthEast Asia. Our vessels include Anchor Handling Tug Supply Vessels, Anchor Handling Tug, Tow Tugs, and Deck Cargo Barges.

We strive to be future-driven maritime oil & gas vessel owners and operate to the highest safety standards and provide unparalleled service. Our vision is to be forward-thinking and to offer the best service available in the industry. Our commitment to excellence is reflected in our consistent track record of success, and we look forward to continuing this tradition of excellence.

Triton Maritime Private Limited



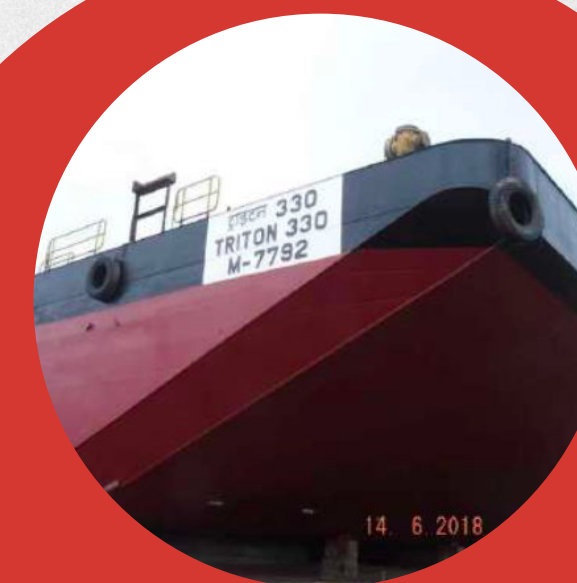
AHTS

Our Anchor Handling Tug Supply vessels provide a range of multi-utility services over a wide area of operations. From search and rescue to oil drilling operations, our fleet of AHT's helps you to deliver to your customers on time and budget.



Towing Tug

Our towing tugs are versatile workhorses that serve to make your offshore operations faster and more efficient. From moving barges and cargo vessels in and out of berth to offshore support, our tugs are highly rated for their high availability and effectiveness.

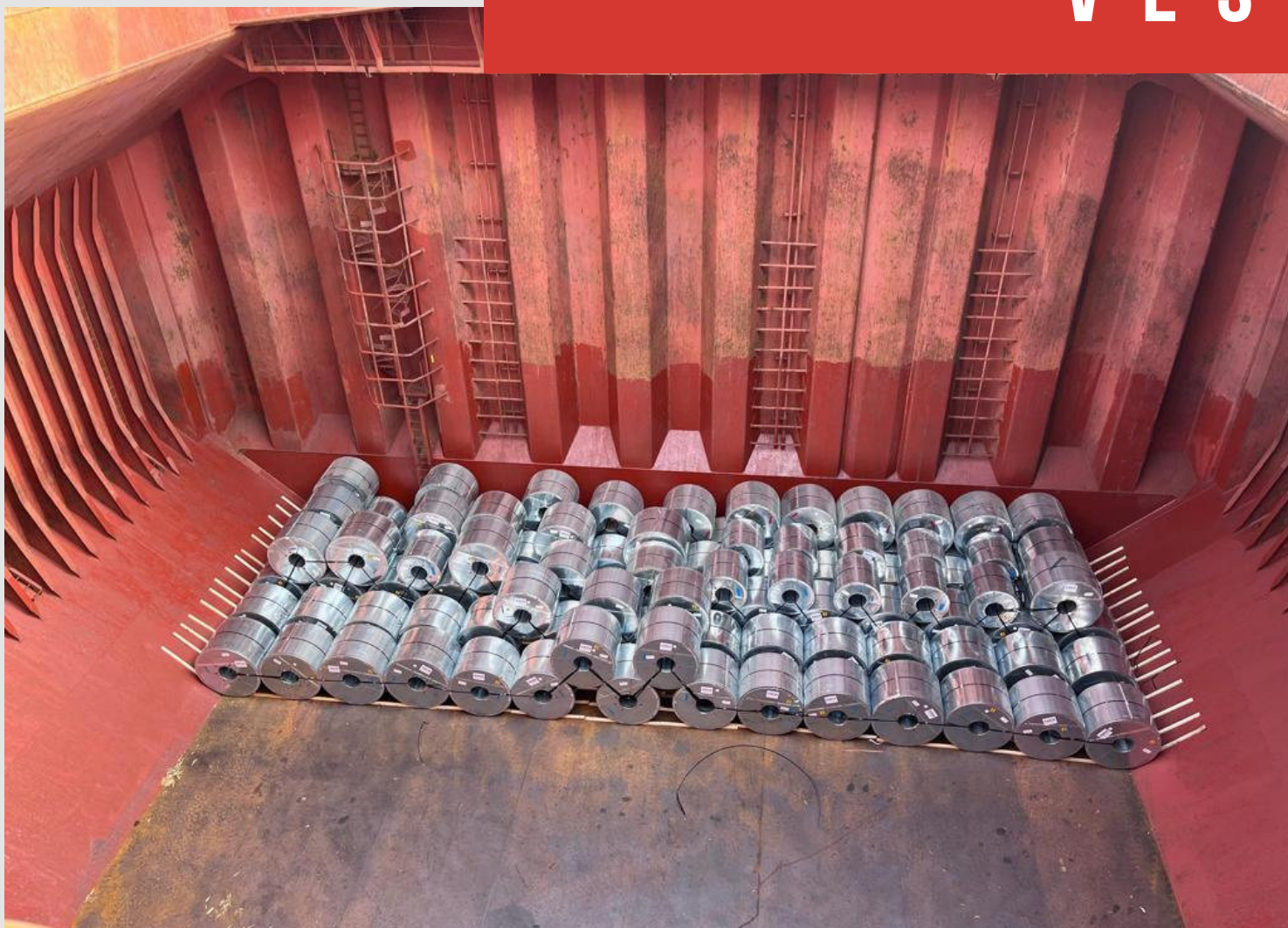


Deck Cargo Barges

To transport outsized loads, our deck cargo barges offer an economical solution. Compliant with international safety and operational standards, they help you bridge the demand-supply gap during offshore activities.



VESSEL CARGO

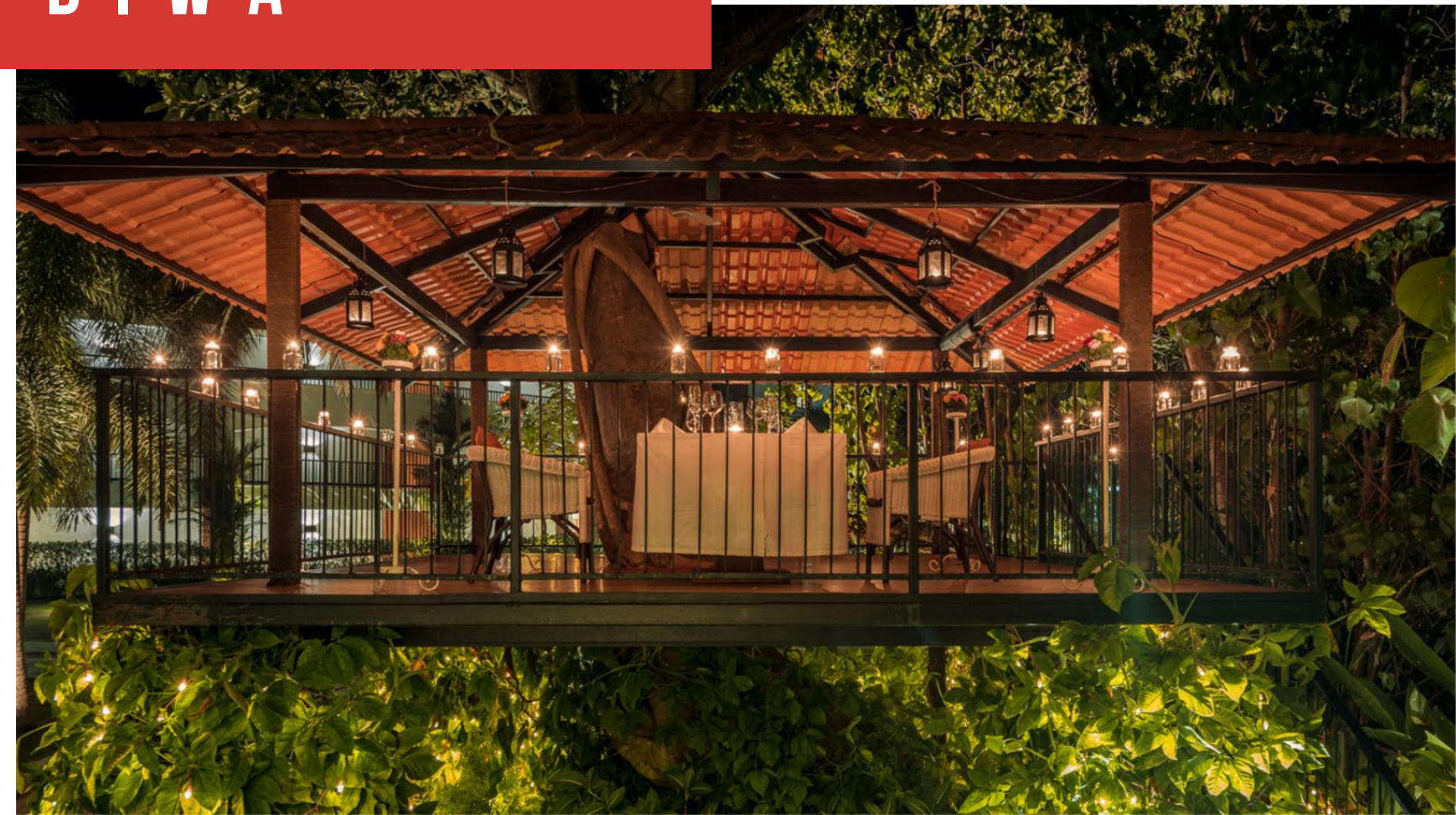


HOSPITALITY

Alila Diwa, Nestled Amidst the Lush Paddy Plantations of South Goa, Promises a 'Surprisingly Different' Experience. Inspired by Nature, the Hotel's Distinct Architecture Enlivens the Innate Beauty of Goa.



ALILA DIWA



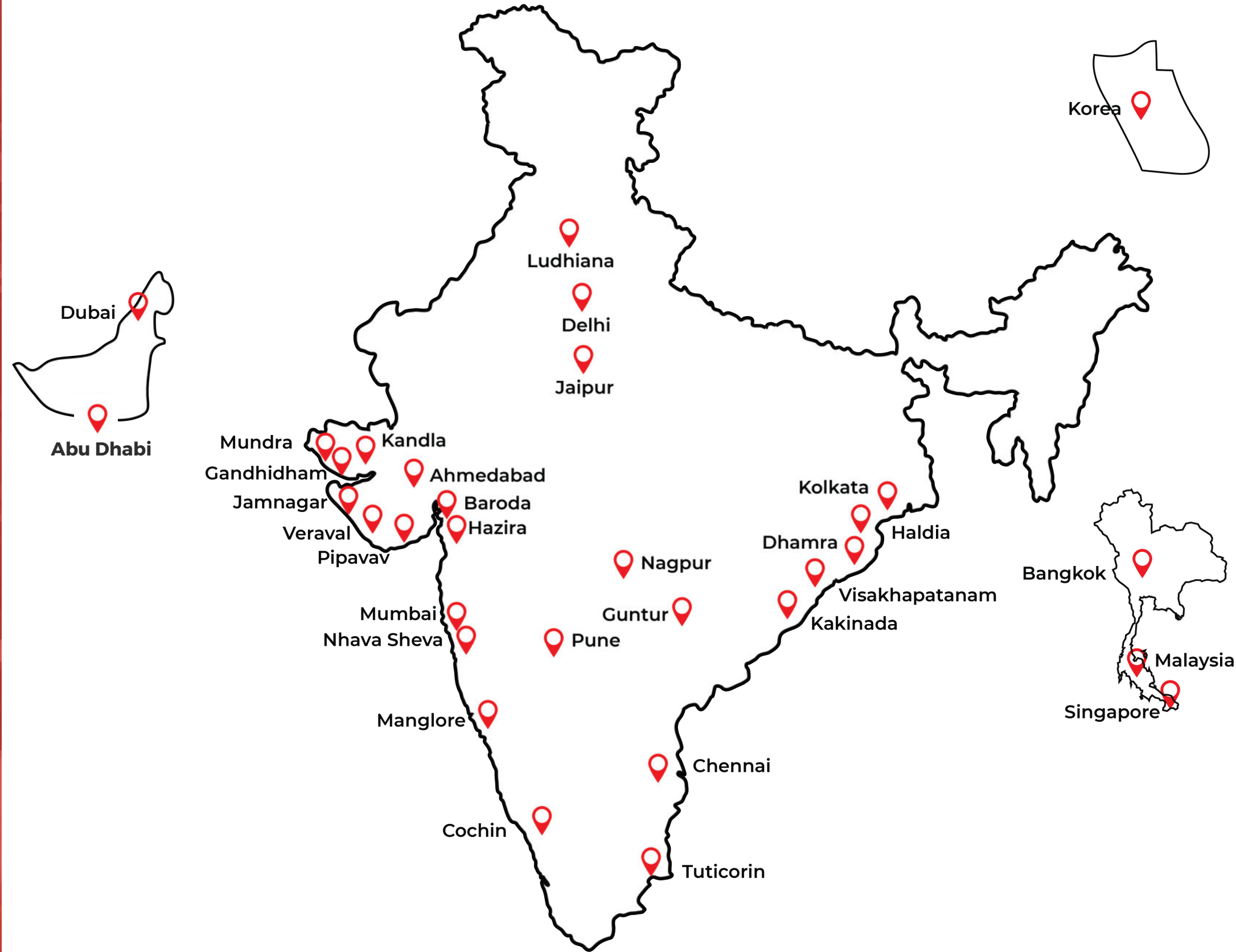


**PAREKH
GROUP**

Our Network

Head Quarters

Anchorage, Near Amarnath Patil
Ground, Off Govandi Station Road,
Govandi [East], Mumbai 400 088,
INDIA





THANK YOU

*We look forward to working
with you*

OFFICE



Anchorage, Near Amarnath Patil
Ground, Off Govandi Station Road,
Govandi [East], Mumbai 400 088,
INDIA



+91-22-66344444



info@parekhgroup.in

